

IES Report

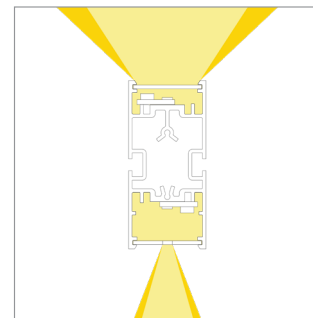
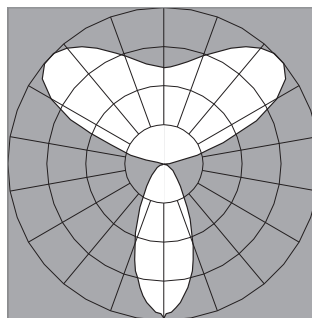
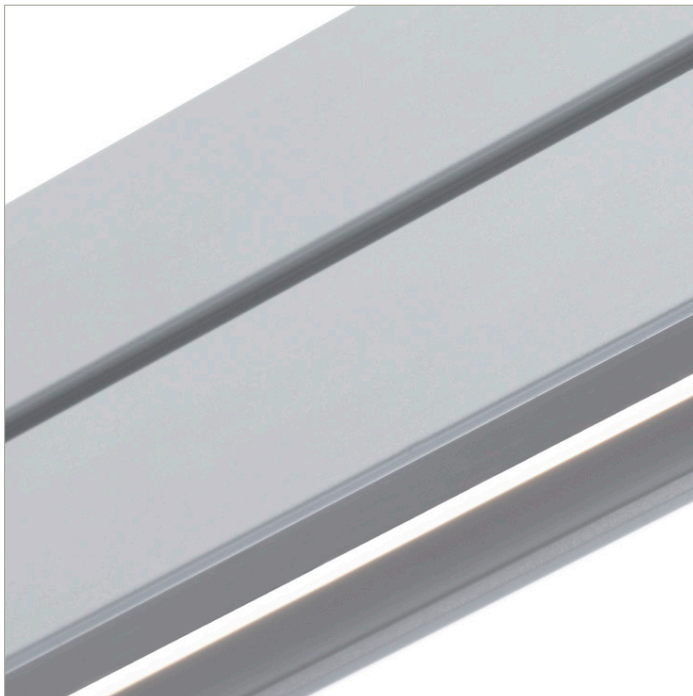
DoubleBox™ | 107 | Wide Batwing, up | 40° Symmetric, down | 80 CRI | LO

107-DB-XX-4-48-XX-XX-XX-XX-X-X-Z-LO-35-G1S1-X-AL / WH-X

	2700K	3000K	3500K	4000K
Efficacy - Lumens per Watt	77	80	81	81
Total Lumens, 4' rail length (1219mm)	2117	2184	2228	2228
Lumens per foot (305mm)	529	546	557	557
Lumens per foot UP (305mm)	371	383	391	391
Lumens per foot DOWN (305mm)	158	163	166	166
Input Power (W), 4' rail length (1219mm)	27.6	27.6	27.6	27.6
Watts per foot (305mm)	6.9	6.9	6.9	6.9
CRI	82	82	82	82

Due to the large number of options in Vode's product offering, most Vode IES reports are factored reports prepared from source reports. Source reports are the IES test reports prepared for Vode by an NVLAP accredited photometric test laboratory. Factored reports are based on data from the Vode source reports.

If the data above is in black, it is directly from a Vode source report. If it is in grey, it is factored from Vode source reports. Reference details on Vode source reports can be found on the [IES File Finder](#) page on [vode.com](#).



IES Report

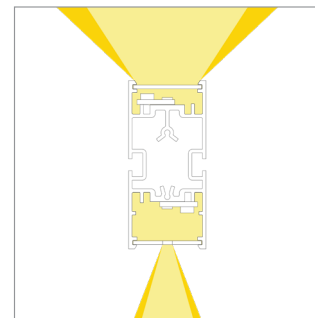
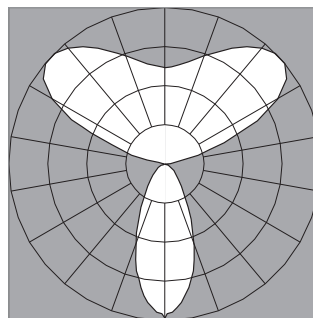
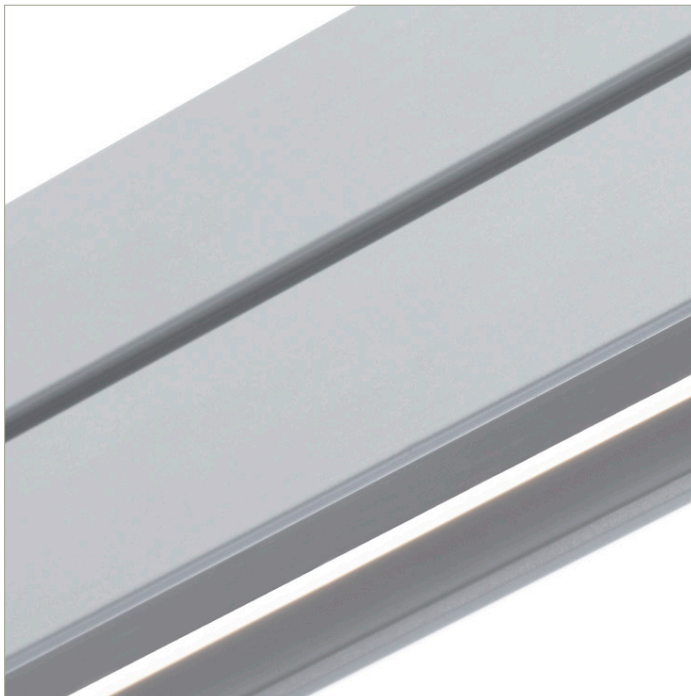
DoubleBox™ | 107 | Wide Batwing, up | 40° Symmetric, down | 80 CRI | SO

107-DB-XX-4-48-XX-XX-XX-XX-X-X-Z-SO-35-G1S1-X-AL / WH-X

	2700K	3000K	3500K	4000K
Efficacy - Lumens per Watt	89	92	94	94
Total Lumens, 4' rail length (1219mm)	4234	4368	4457	4457
Lumens per foot (305mm)	1058	1092	1114	1114
Lumens per foot UP (305mm)	743	766	782	782
Lumens per foot DOWN (305mm)	316	326	333	333
Input Power (W), 4' rail length (1219mm)	47.8	47.8	47.8	47.8
Watts per foot (305mm)	12.0	12.0	12.0	12.0
CRI	82	82	82	82

Due to the large number of options in Vode's product offering, most Vode IES reports are factored reports prepared from source reports. Source reports are the IES test reports prepared for Vode by an NVLAP accredited photometric test laboratory. Factored reports are based on data from the Vode source reports.

If the data above is in black, it is directly from a Vode source report. If it is in grey, it is factored from Vode source reports. Reference details on Vode source reports can be found on the [IES File Finder](#) page on [vode.com](#).



IES Report

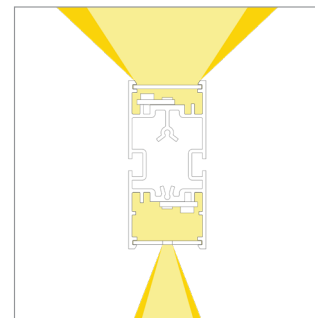
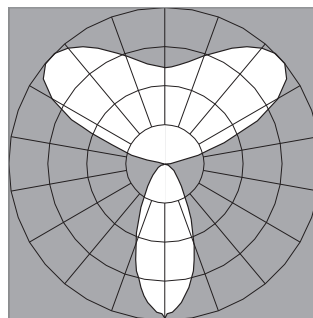
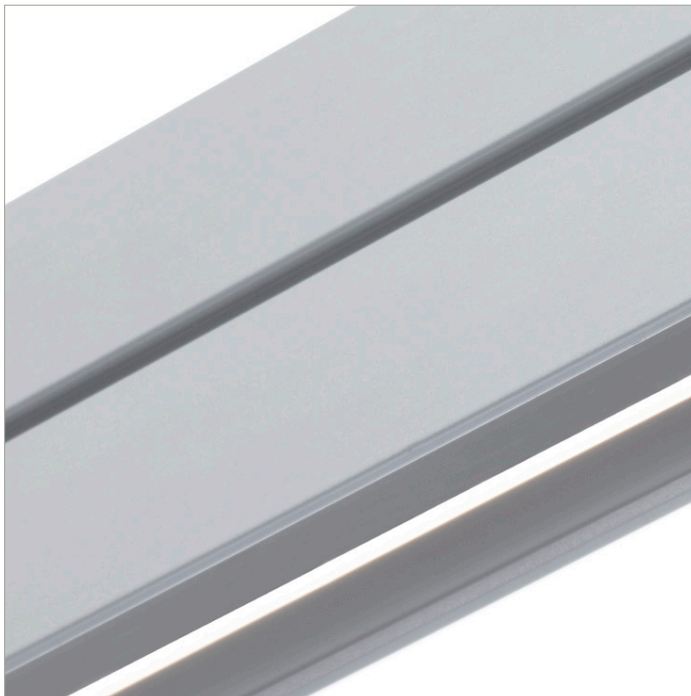
DoubleBox™ | 107 | Wide Batwing, up | 40° Symmetric, down | 80 CRI | HO

107-DB-XX-4-48-XX-XX-XX-XX-X-X-Z-HO-35-G1S1-X-AL / WH-X

	2700K	3000K	3500K	4000K
Efficacy - Lumens per Watt	82	85	87	87
Total Lumens, 4' rail length (1219mm)	8044	8298	8468	8468
Lumens per foot (305mm)	2011	2075	2117	2117
Lumens per foot UP (305mm)	1411	1456	1485	1485
Lumens per foot DOWN (305mm)	600	619	632	632
Input Power (W), 4' rail length (1219mm)	98.1	98.1	98.1	98.1
Watts per foot (305mm)	24.6	24.6	24.6	24.6
CRI	82	82	82	82

Due to the large number of options in Vode's product offering, most Vode IES reports are factored reports prepared from source reports. Source reports are the IES test reports prepared for Vode by an NVLAP accredited photometric test laboratory. Factored reports are based on data from the Vode source reports.

If the data above is in black, it is directly from a Vode source report. If it is in grey, it is factored from Vode source reports. Reference details on Vode source reports can be found on the [IES File Finder](#) page on [vode.com](#).



IES Report

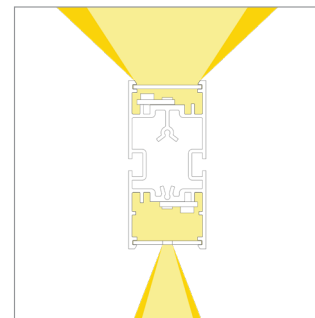
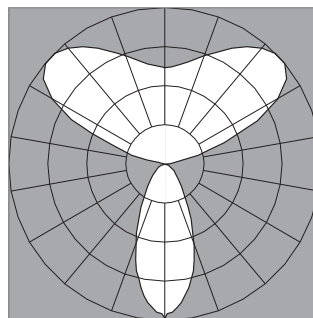
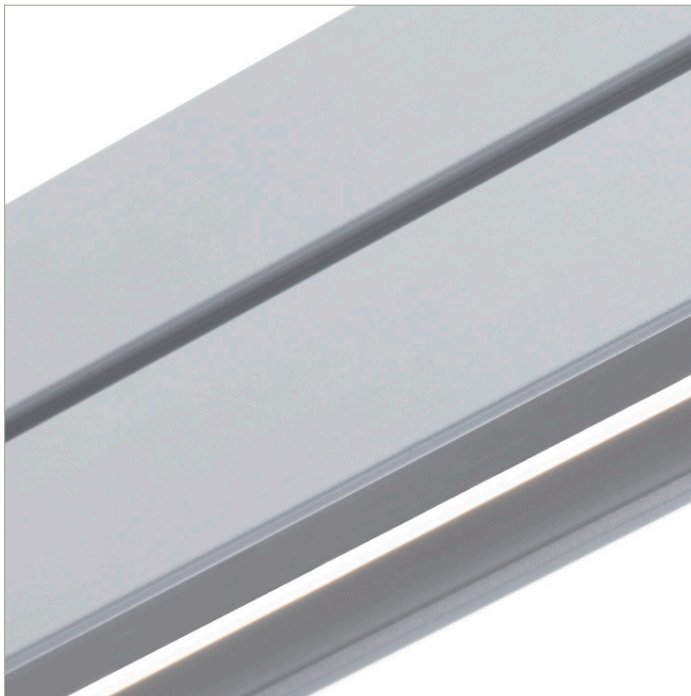
DoubleBox™ | 107 | Wide Batwing, up | 40° Symmetric, down | 90 CRI | LO

107-DB-XX-4-48-XX-XX-XX-XX-X-X-Z-LO-359-G1S1-X-AL / WH-X

	2700K	3000K	3500K	4000K
Efficacy - Lumens per Watt	67	69	70	71
Total Lumens, 4' rail length (1219mm)	1825	1883	1921	1940
Lumens per foot (305mm)	456	471	480	485
Lumens per foot UP (305mm)	320	330	337	340
Lumens per foot DOWN (305mm)	136	140	143	145
Input Power (W), 4' rail length (1219mm)	27.6	27.6	27.6	27.6
Watts per foot (305mm)	6.9	6.9	6.9	6.9
CRI	94	94	94	94

Due to the large number of options in Vode's product offering, most Vode IES reports are factored reports prepared from source reports. Source reports are the IES test reports prepared for Vode by an NVLAP accredited photometric test laboratory. Factored reports are based on data from the Vode source reports.

If the data above is in black, it is directly from a Vode source report. If it is in grey, it is factored from Vode source reports. Reference details on Vode source reports can be found on the [IES File Finder](#) page on [vode.com](#).



IES Report

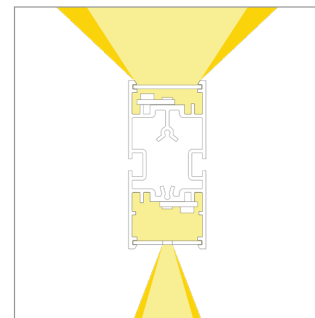
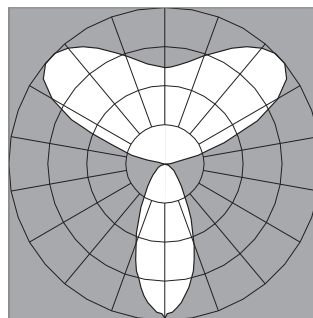
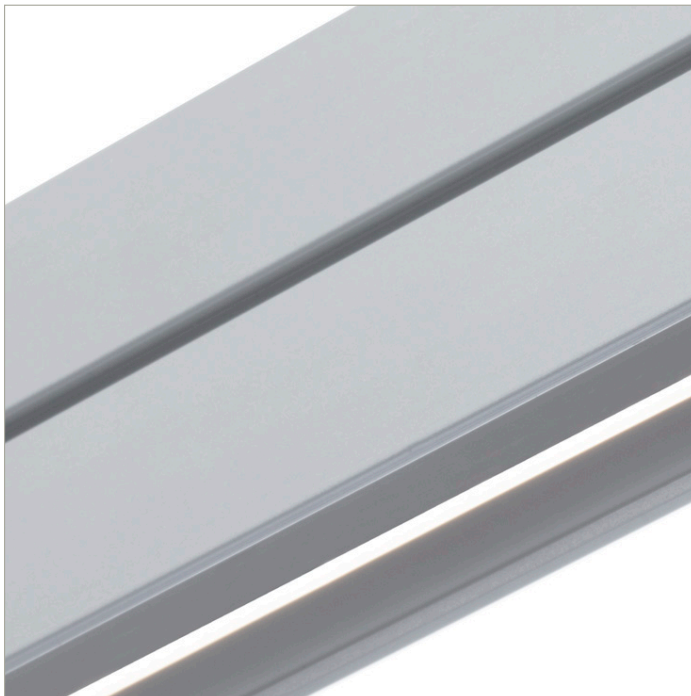
DoubleBox™ | 107 | Wide Batwing, up | 40° Symmetric, down | 90 CRI | SO

107-DB-XX-4-48-XX-XX-XX-XX-X-X-Z-SO-359-G1S1-X-AL / WH-X

	2700K	3000K	3500K	4000K
Efficacy - Lumens per Watt	77	79	81	82
Total Lumens, 4' rail length (1219mm)	3650	3765	3842	3880
Lumens per foot (305mm)	912	941	961	970
Lumens per foot UP (305mm)	640	660	674	681
Lumens per foot DOWN (305mm)	272	281	287	290
Input Power (W), 4' rail length (1219mm)	47.8	47.8	47.8	47.8
Watts per foot (305mm)	12.0	12.0	12.0	12.0
CRI	94	94	94	94

Due to the large number of options in Vode's product offering, most Vode IES reports are factored reports prepared from source reports. Source reports are the IES test reports prepared for Vode by an NVLAP accredited photometric test laboratory. Factored reports are based on data from the Vode source reports.

If the data above is in black, it is directly from a Vode source report. If it is in grey, it is factored from Vode source reports. Reference details on Vode source reports can be found on the [IES File Finder](#) page on [vode.com](#).



IES Report

DoubleBox™ | 107 | Wide Batwing, up | 40° Symmetric, down | 90 CRI | HO

107-DB-XX-4-48-XX-XX-XX-XX-X-X-Z-HO-359-G1S1-X-AL / WH-X

	2700K	3000K	3500K	4000K
Efficacy - Lumens per Watt	71	73	75	76
Total Lumens, 4' rail length (1219mm)	6935	7154	7300	7373
Lumens per foot (305mm)	1734	1788	1825	1843
Lumens per foot UP (305mm)	1216	1255	1281	1293
Lumens per foot DOWN (305mm)	517	534	545	550
Input Power (W), 4' rail length (1219mm)	98.1	98.1	98.1	98.1
Watts per foot (305mm)	24.6	24.6	24.6	24.6
CRI	94	94	94	94

Due to the large number of options in Vode's product offering, most Vode IES reports are factored reports prepared from source reports. Source reports are the IES test reports prepared for Vode by an NVLAP accredited photometric test laboratory. Factored reports are based on data from the Vode source reports.

If the data above is in black, it is directly from a Vode source report. If it is in grey, it is factored from Vode source reports. Reference details on Vode source reports can be found on the [IES File Finder](#) page on [vode.com](#).